

LAST SUPPER IN POMPEII

25 July 2019–12 January 2020

PRESS IMAGES

Images for editorial use are available to download at the following link:

<http://bit.ly/ashmoleanpompeii>

If you need any assistance please contact the Press Office:

T+44 (0)1865 278 178

E press.office@ashmus.ox.ac.uk

ASHMOLEAN



Marble statue of Bacchus with a panther
AD 50–150
From the ruins of a temple in Piacenza, Emilia-Romagna
180 x 64 x 38 cm
Museo Archeologico Nazionale di Napoli



Fresco wall panel showing the distribution of bread

AD 40–79

Pompeii, House of the Baker

69 x 60 cm

Museo Archeologico Nazionale di Napoli



Still life wall panel fresco showing a cockerel pecking at figs, pears and pomegranates
AD 45–79
Pompeii, House of the Chaste Lovers
55 x 52 cm
Parco Archeologico di Pompeii



Marble fountain figure of a seated cupid wearing an animal skin filled with fruit, with traces of polychromy surviving
50 BC–AD 50
Pompeii
26 x 21 cm
Parco Archeologico di Pompeii



Fresco wall panel showing a dinner party with painted messages:

FACITE VOBIS SUAVITER EGO CANTO and *EST ITA VALEAS* (make yourselves comfortable; I am singing; go for it!)

AD 40–79

Pompeii, House of the Triclinium

68 x 72 cm

Museo Archeologico Nazionale di Napoli



Painted Etruscan funerary urn and lid

Terracotta urn with heroic battle scene and Etruscan inscription: *Thana Ancarui Helesa*. (*Thana Ancarui*, wife of *Hele*)

Lid (which does not belong to urn) in the form of a reclining young man

Chiusi, Tuscany

150–100 BC

75.5 x 58.3 cm

British Museum, London



Polychrome mosaic *emblemata* (panel) showing fish and sea creatures

100–1 BC

Pompeii, House of the Geometric Mosaics

103 x 103 cm

Museo Archeologico Nazionale di Napoli



Bronze fountain spout in the form of a seated fisherman holding a fishing rod
50 BC–AD 50

Pompeii, House of the Small Fountain

54 cm high

Museo Archeologico Nazionale di Napoli



Fresco wall panel showing Isis Fortuna protecting a man flanked by the *agathodaemones* (protective serpents), with painted message: *CACATOR CAVE MALU[m]* ('shitter beware the evil [eye]')

AD 40–79

Pompeii

68.7 x 80.3 cm

Museo Archeologico Nazionale di Napoli



Garden-themed fresco wall from the House of the Golden Bracelet, Pompeii

AD 1–50

278 x 178 cm

Parco Archeologico di Pompeii



Blue glass cup with white speckles
50 BC–AD 50
Pompeii
6.2 x 9.4 cm diameter
Parco Archeologico di Pompeii



Bronze *fulcrum* (couch end) in the form of a horse's head
AD 50–100
Origin unknown
Bronze with silver inlay highlights, 15 cm high
Ashmolean Museum, University of Oxford



Marble *oscillum* (circular relief) showing a satyr pouring wine into a *calyx krater* (vessel for mixing wine and water)

50 BC–AD 50

Findspot unknown

Diameter 35.9 cm

Private collection



Still life wall panel fresco showing a rabbit nibbling at figs

AD 40–79

Pompeii

35 x 42 cm

Museo Archeologico Nazionale di Napoli



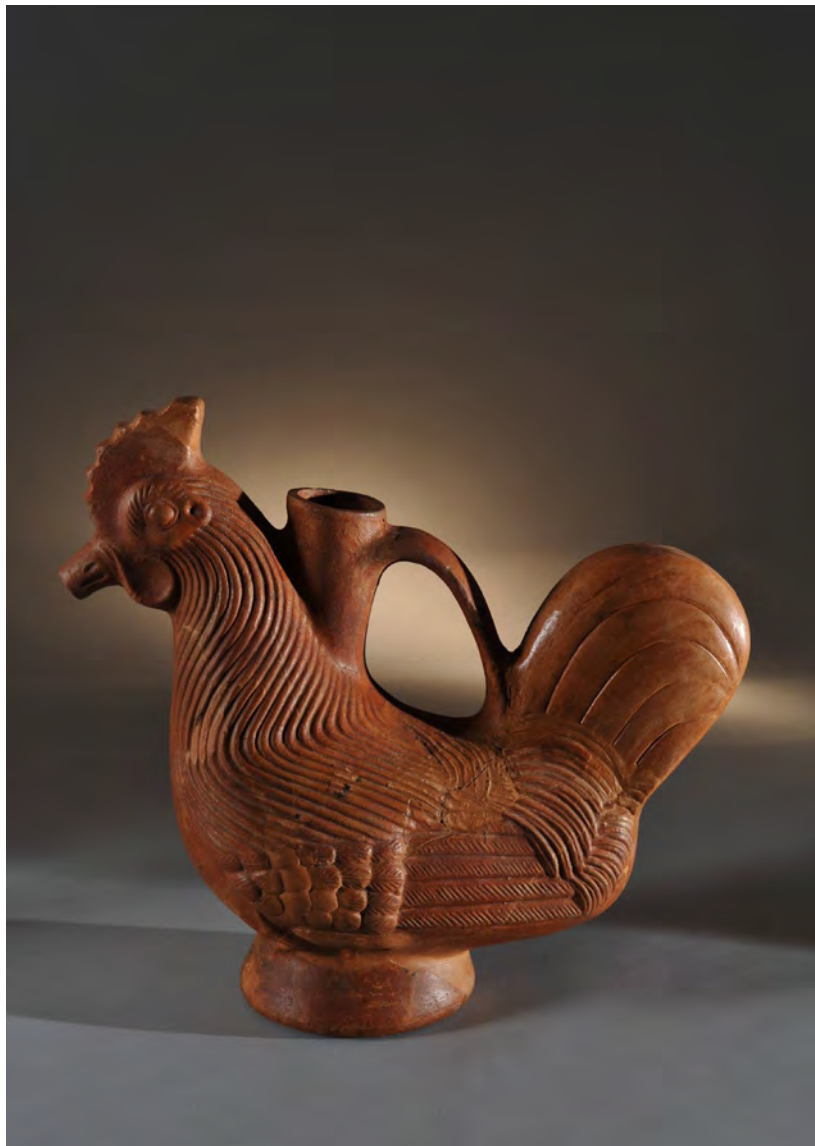
The body of a woman in her early-30s, preserved in transparent epoxy resin

AD 79

190 x 120 cm max

Villa B, Oplontis

Parco Archeologico di Pompeii



Rhyton (drinking or pouring vessel) in the form of a cockerel
AD 1–79

Pompeii, House of the Venus in a bikini

31.5 x 34.5 cm

Parco Archeologico di Pompeii



Bronze reclining satyr from the rim of a vessel
500–400 BC
Possibly from Chiusi, Tuscany
4.5 x 6.8 cm
Ashmolean Museum, University of Oxford



Marble head of Serapis wearing a *modius* (grain measure)

AD 180–200

43 x 22 cm

Walbrook Mithraeum, London

© Museum of London



Gilded silver cups decorated with repoussé olive, vine and myrtle sprays (left to right)
50 BC–AD 150
Ashmolean Museum, University of Oxford



Monochrome mosaic panel of a skeleton holding two wine jugs

AD 1–50

Pompeii, House of the Vestals

91 x 70 cm

Museo Archeologico Nazionale di Napoli



Bronze strainer
500–300 BC
25.5 cm long, diameter 12.5 cm
Findspot unknown
Ashmolean Museum, University of Oxford,



Terracotta votive food: pomegranates (open and closed); grapes; figs; almonds; cheeses; focaccia; honeycomb; mold; long bread
360 BC
Tomb 11, Contrada Vecchia, Agropoli
Parco Archeologico Di Paestum



Gold, silver and bronze ithyphallic tray bearer in the guise of a *placentarius* (pastry seller)
100 BC–AD 79

Pompeii, House of the Ephebe

25.4 x 15 cm

Museo Archeologico Nazionale di Napoli